



THE NORTHWESTERN  
**Lutheran**  
July 18, 1971

**In This Issue —**

- Two More Voices for Southeast Asia . . . . . page 233
- A Time to Plant (Convention Preview) . . . . . pages 234 - 236
- Northwestern College Dedicates Gymnasium . . . . . page 238





# BRIEFS by the Editor

These words are being written before the Milwaukee and Watertown conventions, both of which are of more than ordinary importance to the members of our Synod and to the kingdom of God.

Since the Missouri Synod is larger numerically than our Synod, her decisions will — humanly speaking — have a proportionately greater impact on the future of Lutheranism. At this point we cannot predict what her decisions will be; we can only sense some of the awesome responsibilities her leaders face in this hour.

Sessions of our own Synod will convene in August. We, too, face serious problems. At first glance they seem to center around one word — money. Actually our Lord is asking us: "Is your faith a living faith, or is it only so many words? Do you truly believe that I died for the sins of all? Since by My Spirit I have called you to an awareness of this, do you see that there is really only one choice open to you: to cling to this truth and to share this truth?" Our decisions at Watertown will be our answer to our Lord. God grant

that our answer will be one that can bear the scrutiny of Judgment Day!

Two days after the date of publication of this periodical, a consultation of representatives of the seminaries of our church will take place in Hong Kong. This is one of the most important meetings ever planned by our Board for World Missions. If our Synod is to help these daughter churches on foreign fields to be truly Christian, truly Biblical, and truly Lutheran, we must guide them in their efforts to train their future pastors so that they may preach the Word faithfully. We dare not leave this to chance. Holding us responsible is our Lord who commanded His disciples "to teach all nations, . . . teaching them to observe all things whatsoever I have commanded you." Pray to the Lord of the Church that He bestow His blessing upon this decisive meeting.

Also attending the meeting at Hong Kong, on his way home, will be Pastor T. Paul Mitra. After preaching the Gospel for many years in India on his own, he found himself

to be in full doctrinal agreement with us. Recently ordained and commissioned, he is now returning to his work in India convinced that he is not standing alone. Those of us who had the pleasure of meeting him will never forget him, especially his dedication. I myself will never forget a penetrating question he asked one evening. "Are your people really Christian?" I stuttered as I replied: "Why . . . yes. Why . . . do you ask?" And he said: "I never hear them talk about Christ." Perhaps the word "never" overstates the case, but there is more to this than meets the eye. Are you talking about Christ? Our Lord once put it this way: "For out of the abundance of the heart the mouth speaketh" (Matt. 12:34).

## Your Synod Invites YOU To LAITY DAY

Saturday, August 7

Registration — 9:00 - 10:00  
Synod in Session — 10:30 - 11:45  
Tours and Lunch — 12:00 - 2:00  
PROGRAM IN GYM — 2:00 - 3:30

MEET AND HEAR YOUR HOME AND FOREIGN MISSIONARIES AND THE PEOPLE WHO ARE REPRESENTATIVES OF THE SYNOD'S DEPARTMENTS.

Northwestern College  
1300 W. College Avenue  
Watertown, Wisconsin

The Lord our God be with us, as he was with our fathers: let him not leave us, nor forsake us. 1 Kings 8:57

*The Northwestern Lutheran*

\*

Volume 58, Number 15

\*

July 18, 1971

### Official Publication, Wisconsin Evangelical Lutheran Synod

Published biweekly by Northwestern Publishing House, Milwaukee, Wisconsin. All **BUSINESS CORRESPONDENCE** is to be directed to:

Northwestern Publishing House  
3624 W. North Avenue  
Milwaukee, Wisconsin 53208

Second-class postage paid at Milwaukee, Wisconsin.

**Subscription rates**, payable in advance: One year, \$2.50; Three years, \$6.50; Five years, \$10.00.

A 20% discount is allowed on the one-year rate if 25 or more unaddressed copies are sent in a bundle to one address.

Allow four weeks for change of address and renewal order. Give your old address as well as the new. Send stenciled address from a recent issue or an exact copy.

The deadline for submitting materials intended for publication in *The Northwestern Lutheran* is five weeks before the date of issue. Address all items intended for publication to:

Rev. Harold E. Wicke, Editor  
The Northwestern Lutheran  
3624 W. North Avenue  
Milwaukee, Wisconsin 53208

**THE EDITORIAL BOARD** — Rev. Harold E. Wicke, Editor; Rev. Walter W. Kleinke, Assistant Editor; Prof. Wilbert R. Gawrisch; Prof. Armin W. Schuetze.

#### CONTRIBUTING EDITORS —

F. Blume    E. Fredrich    I. G. Frey    P. Janke    M. Lutz  
A. Panning    J. Parcher    P. Nitz    C. Toppe    K. Vertz

**COVER** — St. John's Ev. Lutheran Church, northeast of Goodhue, Minnesota; Warren J. Henrich, pastor.



# Editorials

## A Gymnasium and Spiritual Service

A gymnasium is not a means of grace, not even when it is on the campus of a ministerial training school. Athletic competition and physical exercise do not make Christians of young men, nor do they make ministers of them. Physical activity cannot effect spiritual well-being, nor can it banish all ills from the dormitory and from the campus.

Rather, a gymnasium is a place for physical activity that promotes physical fitness and perfects bodily skills. Its sports stimulate the desire for competition and the striving for achievement. But all this is on the physical and emotional level.

Still it is not unrelated to things of the spirit as the body is not unrelated to the soul.

"The glory of young men is in their strength," Solomon writes. God has given young men their strength and has created them with the need to find joy in using it. In bodily exertion and in the rigor of the contest youth finds a pleasure and a satisfaction.

Such pleasure and satisfaction contribute to wholesome attitudes. In a healthy frame of mind Christian young people apply themselves more cheerfully to their tasks, be they efforts of personal sanctification, or preparation for spiritual service in the work of the ministry. God can use the physical well-being of young men to make their spiritual service easier.

It is easier to direct a resident ministerial school with a gymnasium than without one.

CARLETON TOPPE

**Habakkuk Who?!** Somebody once asked what went on at Men's Club. "We're spending time with Habakkuk," was the reply. Came then: "Habakkuk who?"

Easy now, as you tactfully explain to us lifelong members that Habakkuk is part of the Book we claim to believe in and live by. We must have more Scripture study in our churches, and we know it.

The hardest thing about starting more Bible study is starting. Having real Bible study is harder than hearing essays on having Bible study. If possible, resist the urge to petition the conference to authorize a committee to survey the possibility of appointing a commission to present for approval a course that could be purchased from the Publishing House.

Reject the numbers game, which tends to despise the "two or three" in number that might be "gathered to-

gether in My name" as a group beneath our dignity even to bother with. Review all reasons that tell you to elect officers, call the roll, collect the dues, read the minutes of the last meeting and rotate the lunch committee in order to study Scripture.

"Quick and powerful, and sharper than any two-edged sword," the Word of God will take care of itself when we unsheath it.

Someone shot a moose once, and the Men's Club broke all attendance records by inviting wives and sweethearts in for moose-burgers. After stumbling about in a smoke-filled basement, taking orders from a chef who got his training in the U.S. Infantry, washing greasy dishes and enduring snide remarks from the gals, we decided to stick to Habakkuk.

The moral is: if you are going to sponsor moose-burger suppers, expound on "Timely Topics" which tend to scratch where we don't itch, or use the hour to field-test synodical overtures and stewardship materials, be sure to put the proper label on it.

Honest people have a right to expect a Bible Study Hour to be just that: a Bible Study Hour.

JOHN PARCHER

## Love Begins At Home

What used to be known as "advice to the lovelorn" columns have in more recent years expanded their field of operations. They now deal with the whole spectrum of tortured human relations.

Two letters recently appeared in one such column on the same day. Both voiced desperate complaints about selfish and overbearing husbands. Other letters from miserable correspondents have cited instances of shocking cruelty toward children by an overly strict parent or pleaded for help in pacifying shrewish wives.

The law of love is not fulfilled by writing a check to charity. It begins at home. Some of the worst violations of that law are committed right there — often on a 24-hour basis and for a lifetime.

The offender, paradoxically, often feels quite righteous in committing his domestic crimes. He stands on the side of truth and right as he criticizes, condemns, and punishes his helpless victims with unflagging zeal.

"Thou shalt love thy neighbor as thyself" is one of the two great commandments of the Law. And who is a closer neighbor, or more in need of love, than a member of one's own household?

IMMANUEL FREY



# "I Am"?

## I AM THE RESURRECTION

John 11:25a

"I believe in the resurrection of the body." How often have we not spoken these words to confess our faith in the fact that we shall rise again, live again, never to die again! Yet how often has not Satan filled our hearts with all kinds of doubts and misgivings that maybe, after all, the grave is the end, that life and immortality are only a dream.

### Our Resurrection Is Sure

Before Christ rose, thereby conquering death and the grave, the symbols of death used by pagans were all signs of futility and despair: a shattered pillar, a ship gone to pieces on the rocks, a harp with its strings snapped, or a crushed flower bud. One heathen writer, typical of all who do not believe in a living Christ, looking at the setting sun, wrote: "The sun sets, but it is to rise again with new beauty. Not so man. When he sets, he is never to rise again."

Ah, but we who believe in a resurrected, living Christ know differently. Our resurrection is sure, surer than even the next sunrise. You remember that as Jesus stood at the grave of His dear friend Lazarus He said to Martha, the sister of Lazarus, "I am the Resurrection and the Life, he that believeth in Me, though he were dead, yet shall he live; and whosoever liveth and believeth in Me shall never die." Whereupon He said to the corpse of Lazarus, already decaying, "Lazarus, come forth!" And Lazarus rose from the grave and lived again to the chagrin of Christ's enemies. Now they knew they had to get rid of Him, for many more would believe that He was the Son of God having power even over death and the grave.

Suppose for the moment, however, that Jesus after His own death on the cross had remained in His bor-

rowed tomb. That tomb today would not be the center of the universe, not one of the most sacred spots on earth, visited by thousands every year. That tomb would be the ghostliest of all graves—the grave of all human hope. But, "thanks be to God," Jesus rose. Death had no dominion over Him. He took on death, faced its ugliness, its horror, and by capitulation conquered it.

### We need not fear death

To all who believe in Him He has given the incredible promise that they too shall rise again. So we too can face death without flinching. We too shall conquer death, and live forever.

Isn't this wonderfully comforting to know as we lay a loved one to rest! The tomb can't hold that dear one forever. On a great day, at the Savior's voice, its doors will fling wide open, and our dear one will come forth with a glorified, perfect body, and will live forever with the Lord.

When death's call takes us personally from this vale of tears, we likewise need not be afraid. The tomb is not our exit but our entrance, not the end but the beginning. Placing our hand in that of our resurrected Savior by faith, we can say as did David so long ago, and with the same sureness of faith: "Yea, though I walk through the valley of the shadow of death, I will fear no evil; for Thou art with me . . . I shall dwell in the house of the Lord forever."

Here is victory, victory for all eternity! "Thanks be to God which giveth us the victory *through our Lord Jesus Christ*," the same Christ who said, "I am the Resurrection and the Life."

KENNETH W. VERTZ

## Prayer Before the Convention

Holy Spirit, our Lord Jesus Christ sent You to be with His Church until His return in glory. We thank You especially for preserving Your Word to us in its truth and purity, and ask You to guard us from ever imagining that this was our own doing. We have no reason, O Spirit of God, to be smug and self-satisfied, but every cause to heed the words of Paul when he said, Let him that thinks he stands take heed lest he fall.

Even as You have moved the hearts of many of our young people to prepare for the preaching and teach-

ing ministry, grant us the willingness and the means to put them to work in the vineyard. Give us the courage and ability to walk through the doors You have opened for us on the right and the left, at home and abroad. As You have called us with a holy calling, so cause us to be ready to share with all men the Good News of their redemption in Christ Jesus.

Bless our Synod as it meets in convention and move the delegates to work zealously for the extension of Your Kingdom of Grace. In Jesus' name. Amen.



## TWO MORE VOICES FOR SOUTHEAST ASIA

### Pastor A. B. Habben

On May 16, 1971, Pastor A. B. Habben was commissioned to serve as Friendly Counselor to the Confessional Lutheran Church in Indonesia. With beginnings having been made in Sukabumi, West Java, and in Singaradja, Bali, by Pastor Martinus Adam, Pastor Habben is to serve as coordinator and supervisor of our mission endeavors in Indonesia. He is to help structure a native



Pastor and Mrs. A. B. Habben

church, which under God's blessings will one day become self-supporting, self-governing, and self-propagating. Realizing the tremendous importance of being able to communicate with the native, Pastor Habben already has begun his studies in the Indonesian Bahasa, the common language in the midst of hundreds of local dialects.

The Habbens were checked and rechecked by "Interpol" before given a visa to enter Indonesia. The check, though annoying, proved to be beneficial, as the Habbens were granted a permanent visa, something rarely issued a newcomer.

Before accepting this call Pastor Habben served at Zebaoth, Milwaukee, Wisconsin, 1943-44; Redeemer, Hastings, Nebraska, 1944-53; as missionary in northern Rhodesia, Africa, 1953-60; and since 1960 in Portland, Oregon, as pastor of Gethsemane Ev. Lutheran Church of Tigard. It was here that the commissioning service for Pastor Habben was conducted by Pastor M. A. Schroeder.

### Pastor T. Paul Mitra

Having served 25 years as an independent evangelist in India, and having then heard of our Synod and having found great comfort in its confessional stand, Mr. T. Paul

Mitra accompanied by his wife came to the States in November, 1970. After he had completed the tutored courses offered him by our Seminary professors at Mequon, Mr. Mitra was presented as a candidate for the ministry. He was ordained and commissioned on May 23, 1971, to return to India as a pastor to his fellow believers, who are now recognized as the Confessional Lutheran Church in India. The ordination and commissioning was held at Mt. Olive Ev. Lutheran Church, Appleton, Wisconsin, with the rite of ordination being read by Pastor M. A. Schroeder.

Pastor Mitra is a third-generation Lutheran. His grandfather turned to the joys of Christianity when he came in contact with a German missionary in India. In order to have time to preach the Gospel, he gave up a prosperous medical practice. Of his two sons, one, Mr. Mitra's uncle, became a pastor and the other, his father, did evangelistic work among the poor. At the death of his father, Mr. Mitra entered the preaching ministry, working as an evangelist in an 800-square-mile area around Madras, India.

Mrs. Mitra, who is a medical doctor, assists her husband in his work. Hers is an important part, since in India it is improper for a man to visit women and speak

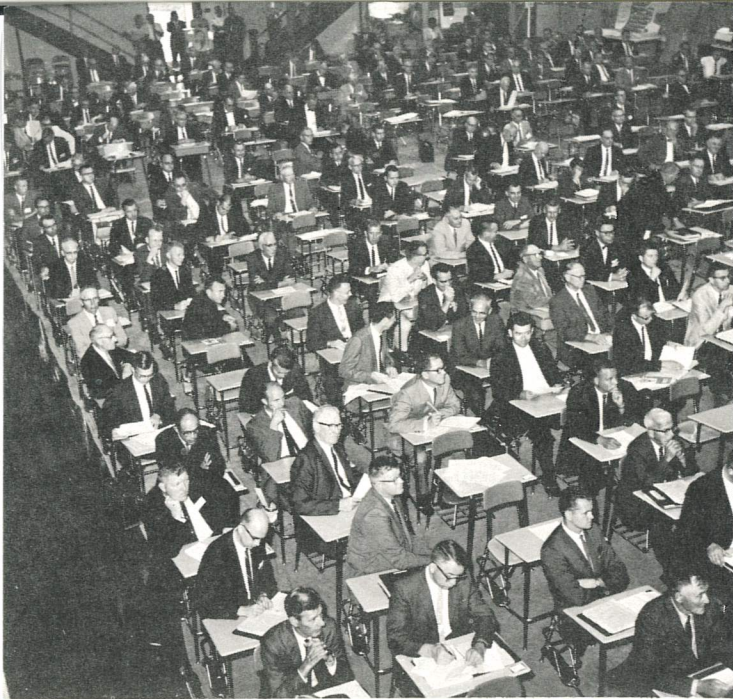


Pastor T. Paul Mitra and Dr. Mitra

to them. Dr. Mitra, while speaking to the women concerning their spiritual needs, is also able to offer them help for their physical ills.

Pastor Marlyn Schroeder, chairman of the Executive Committee for Southeast Asian Missions, writes: "We solicit your prayers for the safety of these two men and their wives as well as for the Lord's richest blessing on their labors in lands so many miles away."





Typical Convention at NWC

On August 4 at 2:00 P.M.—God permitting—the gavel of President Oscar J. Naumann will descend and the forty-first biennial convention of the Wisconsin Ev. Lutheran Synod will be declared in session.

For the next seven days—Sunday excepted—200 voting delegates coming from the 967 congregations of the Synod will review the record of the past biennium and approve the kingdom strategy for the next biennium. Assisting with their counsel will be 100 advisory delegates (with no vote) representing the various boards, commissions, and standing committees of the Synod. Just about 100 of the voting delegates will be laymen—bank officials, farmers, accountants, plumbers, shopkeepers, retired folk—united in their determination to do the very best for the mission of Jesus Christ.

#### BoRaM

The work of the convention focuses upon a 180-page book, the *Book of Reports and Memorials*, dubbed BoRaM. It contains the detailed reports of 54 boards, commissions, and standing committees together with their recommendations for the Synod's work program during the next biennium. In the book are also a number of memorials, i.e., requests by individuals and congregations for a specific action.

Prior to coming to the convention, the voting delegates will have attended area conferences to acquaint themselves with the convention business and the principal issues. Such area conferences should have given the delegates a fair idea of the ground that must be covered by the convention.

In addition to such business, there are elections. Men must be elected to about 50 offices. Every two years the Synod officers must stand for election: the president, the two vice-presidents, and the secretary. In most offices incumbents are eligible for re-election.

# A Time to Plant

## ISSUES AND PROBLEMS BEFORE THE CONVENTION

### Convention Issues

Since most issues are seen in a variety of perspectives, 30 representative leaders of the Synod were asked to state what, in their opinion, would be some of the crucial issues at the convention. President George W. Frey of the Pacific Northwest District summed up the feeling of many. "There appears to be," he said, "no single, overriding issue which would dominate the convention." But he did expect the convention "to keep our priorities in order, so that we don't retrench in doing the work the Lord is assigning to us."

There was a remarkable unanimity in the answers. Most of the issues cited clustered around missions, finances, and education. There was no question that finances and mission/education were intimately related in the leaders' minds.

### Missions

In its report to the convention, the General Board for Home Missions refers to requests of \$5 million for Church Extension Fund money by new missions to purchase land and provide worship centers for the missions. Consequently the board has been forced, according to the report, "to reduce mission openings to the level of the number of mission plants we can fund per year with our limited Church Extension Fund." Translating this into numbers, the board has reduced its mission openings in 1971 to 12, down from 19 in 1970.

Considering this lamentable decision, President Daniel W. Malchow of Northwestern Lutheran Academy says that a "renaissance of the Church Extension Fund is imperative. For years this crying need in home mission work has called for urgent relief." At this convention, he says, "this critical situation begs for a favorable answer."

Pastor Carl H. Mischke, the Synod's first vice-president, noted the same issue but also called for increased support of the Synod's operating budget. That is the issue, he said, "with which we will have to deal decisively



in convention and carry out just as decisively in the months that follow. We must have a substantial increase in our Church Extension Fund while at the same time increasing our support for the operating budget."

"Failure to do so," Pastor Mischke warns, "will make it impossible for us to use the gifts of pastors and teachers that God is giving us. We must take bold action now."

#### \$1 Million Special Offering

The Conference of District Presidents, responsible for funding the budget, is asking the convention to consider a \$1 million special offering for the Church Extension Fund. The District presidents observe that the budget being recommended to the convention requires an increase of 10 per cent in offerings in 1972. The report of the presidents asks the question, "Can we raise our giving by 10 per cent in 1972 and also add a special offering with a \$1 million goal?" Only the 967 Synod congregations, the presidents say, "speaking through their authorized delegates can answer that. We are hopeful, however, that the convention delegates will speak clearly and courageously on the subject."

Changing the focus somewhat, Pastor Arnold L. Menicke of the Board for World Missions sees our mission work in Africa as an important issue. In Africa, he said, "there are tremendous opportunities. The forward movement of Mohammedanism seems to have slowed and Christianity is spreading." If the present trend continues, he said, 50 per cent of Africa will be Christian by the year 2000. Asking for a greater concentration of manpower and resources in Africa, he points to a 45 per cent increase in membership in our mission there in the last biennium.

#### South America Now

Pastor Raymond H. Zimmermann, chairman of the Board for World Missions, singles out South America as a key issue. "I believe," he said, "that the time to go into South America is NOW."

A special survey team of the World Board spent three months in South America in early 1971. As a result of the survey, the World Board is recommending that the Synod start in one of three places selected by the survey team. The survey team's eight-page report on South America is included in BoRaM. "As the Day of Judgment draws nearer and nearer," the report concludes, "and the clouds of spiritual darkness still hang heavy over the lives of so many souls in South America, may we plead that we do not waver in our determination to proclaim the truths of the Gospel also on this continent."

#### Role of the Academies

President Conrad I. Frey of Dr. Martin Luther College singles out a report of the Commission on Higher Education on the role of the Synod's academies as "a matter of more than passing interest to the convention and to the entire Synod." The Commission's report, the result of an intensive two-year study, is recommending to the

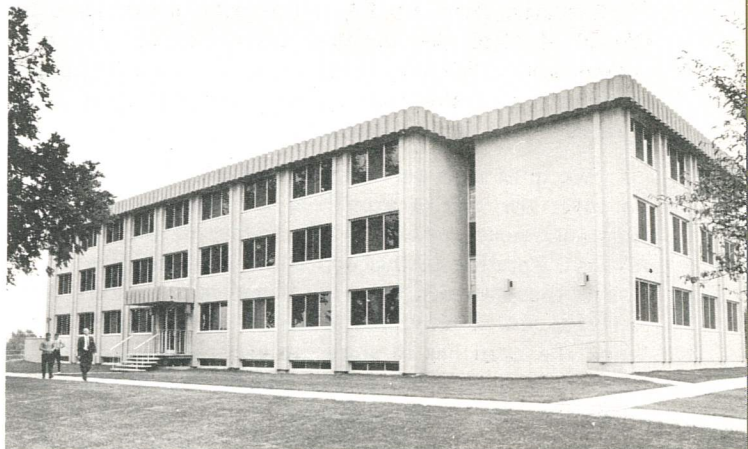
convention that the Synod continue and strengthen its academy system.

In four academies (high schools with specialized curricula and boarding facilities), the Synod begins at the ninth-grade level to prepare its future pastors and teachers. Graduates of the academies normally continue at the Synod's two colleges, maintained for the preparation of pastors and teachers. The academy system, dating back 100 years, has been under some fire as education costs spiraled and more students entered the college level from area Lutheran high schools and public high schools. The academies currently enroll about 900 students.

#### Interchurch Relations

President Oscar J. Siegler of Martin Luther Academy and a member of the Commission on Doctrinal Matters feels that at the convention "we'll have to watch ourselves with reference to our church connections in Germany."

In its report to the convention, the Commission refers to its discussions with two free churches in Germany — the Ev. Lutheran Free Church and the Ev. Lutheran



Wartburg Hall where delegates will be housed

(Old Lutheran) Church. It points out that not only is the Wisconsin Synod in fellowship with these two church bodies, but so also is The Lutheran Church — Missouri Synod.

In 1961 the Wisconsin Synod suspended fellowship with the Missouri Synod. It charged the Missouri Synod with departing from Scriptural doctrine and practice, particularly in the matter of fellowship with those with whom it was not in complete doctrinal agreement.

The Commission reports that in discussing this situation (which has led some to charge the Wisconsin Synod with inconsistency) with the free church representatives "there was agreement that such a confused state of fellowship relations could be justified only as a temporary situation."

"We feel constrained to say at this time," the Commission reports, "that the Missouri Synod's declaration of fellowship with the American Lutheran Church at its Denver convention has brought about a new situation.



The American Lutheran Church's broken stand on the doctrine of the Holy Scriptures and its inerrancy, its fellowship relations with heterodox Lutheran bodies, and its ecumenical relations with the Lutheran World Federation and the World Council of Churches, and its unsound lodge practice, are a matter of knowledge in the German free churches."

"We are therefore constrained," the report concludes, "to ask our brethren in Germany at this time how it is still possible for them to continue their fellowship relations with The Lutheran Church — Missouri Synod. Does not the Missouri Synod's fellowship with the ALC at the very least demand that the free churches declare themselves to be in a state of confession?"

"In a state of confession" is a technical ecclesiastical term meaning "to be in a state of vigorous protest with the implication of suspending fellowship if the situation is not remedied."

Viewing this relationship as one of the issues of the convention President Siegler observes, "I'm hoping we will be able to speak a clear language on that matter."

#### Funding the Budget

Executive Secretary Edgar Hoenecke of the Board for World Missions ties together money and mission as a prime issue. "To every thing there is a season," he said quoting Ecclesiastes, "and a time to every purpose under heaven . . . a time to plant."

"We must urge our congregations to raise their sights to cover the cost of growth of the Synod's program at this auspicious moment in the history of the Wisconsin Synod." Pointing to this opportune time for planting he warns that "we will have the blame in the future when a sparse and spindly crop is harvested for the really big work the Lord has in store for every faithful Christian Church. In home missions the time is ripe; in world missions the hour is already late!"

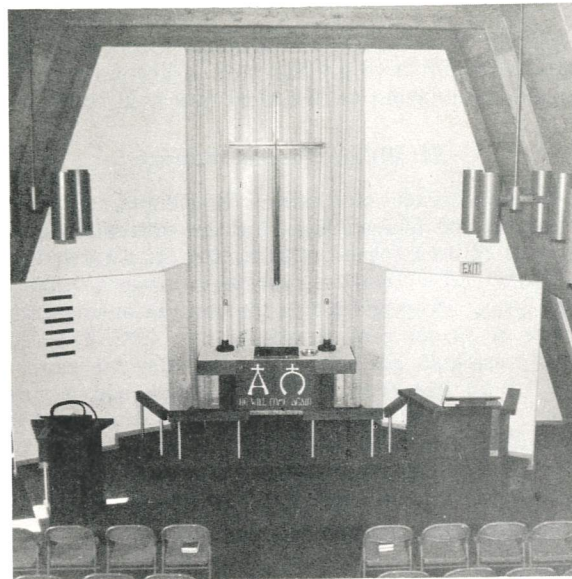
#### Convention Theme

As the delegates put the newly built gymnasium at Northwestern College to its first official use, before them will be a banner bearing the convention theme, *We Believe and Therefore Speak*. It will daily remind them of the Synod's unparalleled opportunity to testify before all the world of God's free grace in Jesus Christ. As it is before the eyes, it will be on the heart of each delegate.

On the solution of many of the issues there may (and will) be considerable difference of opinion. The debate on some of the resolutions may be quite warm. Even the church of the New Testament was not always united in ways and means. But on one matter there will be no division—the continuing purpose of the Wisconsin Ev. Lutheran Synod "to serve all people in God's world with the Gospel of Jesus Christ on the basis of the Holy Scriptures."

THE REV. JAMES P. SCHAEFER  
Stewardship Counselor

## Dedication Of Peace Ev. Lutheran Church New Carlisle, Ohio



On November 14, 1962, 18 people crowded into a home in New Carlisle (near Dayton), Ohio, to attend the first exploratory service. On May 16, 1971, more than 365 people attended the first two services conducted in Peace Lutheran Church's new chapel. After 8½ years of worshiping in makeshift facilities, the members of Peace Lutheran were indeed filled with joy on this day of dedication.

A door-opening ceremony preceded the 10:30 A.M. service. Guest speaker at the service was the Rev. D. Laude, who reminded the congregation of the words of the Psalmist, "Lord, I have loved the habitation of Thy house." A standing-room-only gathering, including guests from four different states, attended the 4:00 o'clock afternoon service. The Rev. D. Gieschen, chairman of the Michigan District Mission Board, encouraged the congregation to remember that a church building is not only wood and stone, but is "the House of the Lord" when the Lord is present through His Word and Sacraments.

The new church features cedar-shakes siding outside and natural-wood finishes inside. The building contains somewhat more than 3,500 square feet of space. It provides a nave which seats 120, a balcony which seats 40, a narthex, a mothers' room, an all-purpose room, a pastor's office, and another area for Sunday school and fellowship gatherings. The building, which can be easily expanded, was designed by Mr. Duane Anderson, our Synod's architect. Total cost of the project was approximately \$75,000.

Pioneer Pastor of Peace Lutheran Church was the Rev. Keith Haag, who served the mission on a part-time basis for 6½ years. The undersigned is the first resident pastor, since July 1969. Growth has been quite encouraging in this heavily unchurched area. The 108 souls and 60 communicants of Peace Congregation anticipate that their new chapel will be a great assist to their Gospel witness in this area of southern Ohio. We thank the Lord for His rich blessings.

OLIVER H. LINDHOLM, Pastor



## Dedication At Trinity, Nicollet, Minnesota

"Keep thy foot when thou goest to the house of God, and be more ready to hear than to give the sacrifice of fools; for they consider not that they do evil." This was the message from Ecclesiastes, chapter 5, presented by the Rev. M. J. Lenz, president of the Minnesota District and guest speaker at the dedication service at Trinity Ev. Lutheran Church in Nicollet, Minnesota, on April 25, 1971.

In the afternoon service, Pastor G. Horn, first vice-president of the District, spoke on the "Ministry of the Keys." He pointed out that the proper use of the church is to proclaim the true Word and administer the true Sacraments. Joy in music and song was the note of the evening festival service, in which Mr. Herbert Wolff of New Ulm served as guest organist, and the voices of the school children, church choir, and octet proclaimed the praises of the Lord.

The day-long dedication observance was attended by some 2,100 members and friends of Trinity.

The new Trinity Ev. Lutheran Church will provide ample space for the various activities of the congregation. The nave is 63'x66' and affords seating for over 400 persons. The chancel has been emphasized by its special design. Its wall, faced with Georgia marble laid in random pattern, offers a rich background for the cross, the principal symbol of our faith. The severely simple and strong design of the altar, the pulpit, Communion rail, the baptismal font and the lectern, expresses the resolve of the congregation to remain doctrinally strong in the Lord. The 1905 organ, which was completely renovated, is located in the balcony.

The attached 70'x48' fellowship hall will accommodate a multiplicity of activities, including intramural sport activities and the school-lunch program. Trinity has maintained a Christian school from its beginning. The school is presently staffed by five teachers.

The stone-face brick exterior of the church presents a reserved contemporary design. Its main facade faces Main Street and the community. In the 68' tower, topped by a large aluminum cross, also hangs the 73-year-old original bell.

Trinity Congregation was organized in 1869 in a log house in Old Nicollet. In 1891 the congregation joined the Wisconsin Synod. A church was built in the newly organized village of Nicollet in 1898. Its present new church was an outgrowth of Trinity's centennial celebration in 1969. When remodeling plans were discussed,



Trinity Ev. Lutheran Church

the congregation decided to purchase five acres of land and erect a new building instead.

While the congregation has now moved into a new and more efficient church building, it is still dedicated to following in the footsteps of its forefathers, who looked to their Lord for strength and guidance and kept His Word in their midst in its truth and purity. For this reason the new church will be more than just a beautiful structure; it will be a place where all may call upon the name of the Lord for comfort and forgiveness.

RALPH J. POLZIN, Pastor

## A NOTE FROM OUR CIVILIAN CHAPLAIN

"Vietnam!" The name has become a household word. Many people have used it to express their personal feelings and judgments. Many of the Vietnamese one meets cannot remember a time when their country was not involved in war. The time has now stretched to 25 years.

Our Synod's prime interest in Vietnam until now has been to serve with Word and Sacrament the many young people from our own congregations who are fulfilling their responsibilities to their country. About six years ago God directed the Lu-

theran Spiritual Welfare Commission and the Synod to commission a pastor of our Synod to serve as civilian chaplain in Vietnam. In so far as time permits, he also visits the much smaller number of Wisconsin Synod people stationed in Thailand.

Perhaps the best way to describe this ministry is to say that it is expansive. South Vietnam is divided into four military regions, and each one of the regions has numerous bases. This necessitates much travel. The travel is not always as conveniently arranged as in the States. However, every trip (as all of our pastors who have been here will testify) is most richly blessed by our God. The hunger for Word and Sacra-

ment on the part of our young people far away from home is something to testify to. The temptations to which they are exposed have not decreased with time. The only thing that fortifies these young men is the power of Christ's Gospel. For this they thank our Lord Jesus first of all, and then you people at home who have supported our ministry in this country.

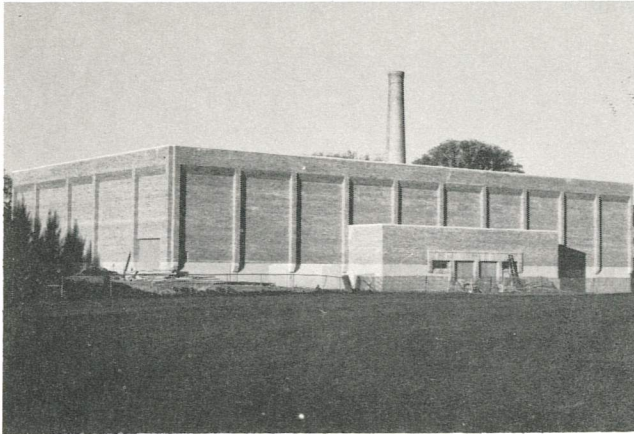
Allow me to make a suggestion. If some of our congregations are able to send tapes of their Sunday services to their members stationed in this part of the world, I am confident this would be deeply appreciated.

CIVILIAN CHAPLAIN R. EHLKE



# Gymnasium Dedication

## Northwestern College



Left: New Gymnasium. Right: Officiating at the dedication were (left to right): Mr. George Reul (Board Member), Prof. Edgar Pieper, Professor Wm. Zell, NWC President Carleton Toppe, Pastor Carl



Mischke (President of the Western Wisconsin District), and Pastor Reginald Siegler (Chairman of Board of Control). (Courtesy Watertown Daily Times, Watertown, Wisconsin.)

Dedication ceremonies for the new gymnasium at Northwestern College, Watertown, Wisconsin, were held at 6:30 P.M. on June 2, the day before commencement. Pastor Carl Mischke of Juneau, Wisconsin, first vice-president of the Synod, delivered the address; Pastor R. A. Siegler of Bangor, Wisconsin, chairman of the Board of Control of the college, read the rite of dedication.

Even though all work on the building had not been completed, the dedication was held at this time because student band and choral groups were still available to take part in the festivities; and alumni who had gathered for their annual meeting and banquet were also present in goodly numbers, together with the parents of students to be graduated on the morrow.

The new physical activities building fills a longfelt need. Adequate practice schedules can now be set up for both college and preparatory-school basketball and wrestling squads engaged in interscholastic competition. The intramural program will be expanded, and physical education classes will be accommodated more readily. A more diversified physical activities program will also be introduced; for example, such activities as gymnastics, weight-lifting, handball, and indoor archery are now possible.

The new building has two levels, with a total area of 30,000 square feet. Three practice courts for basketball will be available on the upper level. One of the courts

is raised about three feet above the rest of the floor and will double as a stage area for special events. The game court is superimposed on two of the practice courts.

Bleachers on the main floor will seat 960 people. Movable bleachers on the raised floor will accommodate an additional 460. For certain occasions the main floor could seat 2,000 people.

The main entrance leads from the parking lot into a spacious lobby at the west end of the lower level. Here are located the ticket booths, coatrooms, concessions, and restrooms. In addition to the usual facilities on the lower level of a gymnasium, there is a large (35'x70') wrestling room, which will also contain an archery range and be fitted with nets for batting, golf, and tennis practice.

"Missio Dei" funds furnished the \$715,000 for the construction of the building and for basic equipment. A special collection among congregations in the Watertown area and in the Central Conference will be used for additional equipment in the gymnasium, as will the gift of \$10,000 from the Alumni Society. The contributions of many other donors also provided furnishings and equipment for the building.

To the congregations of our Synod and to the many individuals whose contributions made our new gymnasium possible we express our gratitude. But above all, our thanks go to the Lord who builds and maintains our schools through His faithful people.

C. TOPPE



## Northwestern Lutheran Academy Graduation

### Prof. K. G. Sievert Retires

Graduation exercises were held at Northwestern Lutheran Academy, Moberg, South Dakota, on June 2 with 18 seniors receiving their diplomas. Throughout its four years on our campus this class has always been the smallest in the student body. What is unusual, however, is that through the years the size of the class did not decrease. Although a difference in personnel occurred, there were only 18 who enrolled in the fall of 1967.

The commencement speaker was Prof. Karl G. Sievert, who is now retiring after 43 years of consecutive service at the Academy. In 1928 he was the first professor called to our school. As a result he enjoys the unique distinction of having personally instructed every student who ever graduated from NWLA. Over the

years, he has also taught every subject included in the curriculum. His graduation address centered about the Savior's words, "Let not your hearts be troubled." He alerted the graduates to the many temptations they would face in the immediate future but assured them that allegiance to their Savior would permit nothing to separate them from the love of Christ.

A farewell service was held for Prof. Sievert in the school auditorium on the evening preceding the commencement. This service, arranged by the Board of Control, not only marked the close of 43 years of teaching at the Academy, but also the end of 50 years in the active ministry. Before coming to the Academy, Prof. Sievert had served parishes at Willow Lake and Grover in South

Dakota. The main speaker for the occasion was President emeritus R. A. Fenske, a longtime colleague of the jubilarian. Basing his words on Psalm 50:14, 15, he pointed out that although life's "golden years" are beset by labor and sorrow, our gracious Lord never fails to supply all needed strength and comfort. The Academy Choir sang: "Lord of the Church, We Humbly Pray."

In addition to receiving various gifts, the jubilarian also was the recipient of numerous congratulatory messages, including one from Senator Karl E. Mundt. A commemorative plaque honoring Prof. Sievert's service to the Academy was displayed and will be affixed to one of the main halls of the school's Administration Building.

We take this opportunity to beseech the Lord for His rich blessings upon Professor and Mrs. Sievert in their retirement.

D. MALCHOW, President

## Direct from the Districts

### Minnesota

#### Bloomington Lutheran Self-Supporting

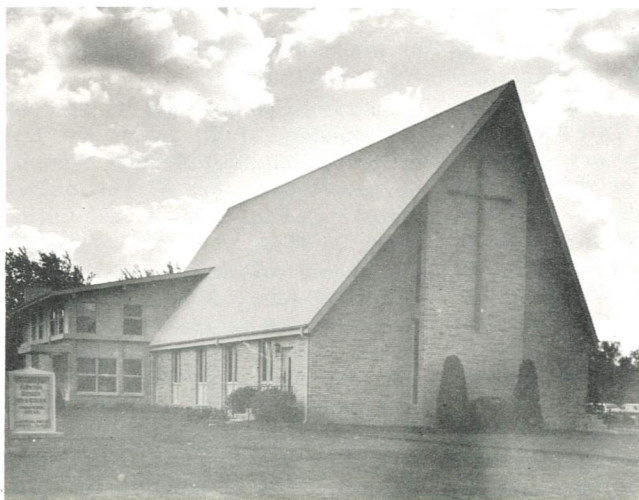
The year 1971 is a milestone in the history of Bloomington Ev. Lutheran Church, Bloomington, Minnesota. Since its beginning in 1951 as a mission of the Minnesota District, the congregation had been subsidized by the members of the Synod. At their meeting held in January, 1971, the voting members of the congregation

took full note, after an extensive stewardship program held the previous fall, of the blessings the Lord of the Church had granted Bloomington Lutheran throughout its history. Certain that the Lord would continue His blessings, the voters decided to terminate all Synod subsidies, thereby assuming for the congregation the status of self-support. The congregation numbers about 900 souls with 580 communicants. Its growth rate is among the most rapid of the Synod's congregations.

Special services of praise, thanking the Triune God for prospering the congregation to the day of self-support, were held on Sunday, March 21, 1971. President O. Naumann addressed the worshipers on the basis of I Peter 2:9, 10 urging them to continue to show forth the praise of the glorious Savior. Special anthems of praise were sung by the congregation's choir, under the direction of Teacher G. Bauer. The pastor of the congregation, D. Begalka, read the liturgy. A special thank-offering of over \$600 was designated for World Mission radio broadcasts.

Bloomington Lutheran has always maintained a large Christian day school. The day-school enrollment stands at 120. Members of the day-school staff in addition to Principal Gerhard Bauer are Miss Virginia Werner, Miss Kathleen Stindt, Miss Judith Tews, and Mrs. G. Bauer.

Truly, the Lord has showered His love upon this congregation as it prospers under His hand! Looking back on years filled with the Savior's grace, the con-



Bloomington Ev. Lutheran Church



gregation looks forward to greater efforts in His kingdom as He feeds it with His Word and Sacraments.

## Nebraska

### New Parsonage at Valentine

The way of all flesh is also the way of all buildings. Generally they seem to be made to last only a little longer than the occupant. This caused the members of Zion Ev. Lutheran Church of Valentine, Nebraska, in the summer of 1969, seriously to consider constructing a new parsonage. So writes the Rev. Norman T. Paul, pastor of Zion.

By January, 1970, the congregation was ready to give the go-ahead. But God had greater plans for this mission congregation, which was conducting a Christian day school and had but 181 communicant members. The fact that Synod funds were scarce seemed to be a real obstacle at first. However, confident that God does not give us work that we cannot do, the congregation began construction on October 1, 1970. By February, 1971, members of Zion assumed self-support, after receiving a final subsidy gift of \$3,372 from their brethren in the Synod. The building was finished early in March and was occupied by the pastor and his family on March 14.

The members of Zion in Valentine would like to have their sister congregations rejoice with them over their new property and their new status as a self-supporting congregation.

The parsonage was erected on one of the 10 lots where the day school is located. The address is 221 North Haley Street. The date of dedication was April 25, 1971. Ninety-six people attended the special afternoon service. The message was delivered by Pastor P. Soukup, former vicar at Zion. His text was Hebrews 3:4-6. With the theme, "God is the Builder of All Things," he reminded the assembly of the grace of God in providing this house and, above all, the spiritual house of which we are all members through Christ.

## Northern Wisconsin

### Teacher and Mrs. Schultz Married 60 Years

Mr. Ferdinand Schultz, a retired Christian day-school teacher, and his wife celebrated their 60th wedding an-

niversary on December 29, 1970. In a special service at St. Lucas Lutheran Church, Kewaskum, Wisconsin, Pastor Paul Hoenecke addressed them on Ephesians 5:22-24. Their 11 children and their families formed a choir to sing the praises of God. Two of their sons, Loran and Ferdinand, served as organists.

Mr. Schultz served congregations in Columbus, Milwaukee, Kenosha, Granville and Neilsville, Wisconsin, and Manistee, Michigan. After his retirement he assisted at St. Paul's, Town Forest, Wisconsin, David Star, Kirshayn, Wisconsin, and at our Apache Indian Mission in Arizona.

Both Mr. and Mrs. Schultz enjoy good health and remain active in the life and work of the church. They have two sons and a son-in-law in the pastoral ministry and two sons in the teaching ministry.

May the Lord, who has permitted Mr. and Mrs. Schultz to impart many blessings to others, impart His special blessing to them in the twilight years of their lives!

## Southeastern Wisconsin

### Pastor's Wife Dies

Mrs. Esther A. de Galley, nee Muenkel, wife of Pastor James de Galley, died suddenly on June 2, 1971, at the age of 55 years. Pastor de Galley serves St. Paul's Ev. Lutheran Church, North 73rd Street, Milwaukee, Wisconsin. Mrs. de Galley was a teacher in many of our Christian day schools both before and after her marriage to Pastor de Galley. The funeral service was held at St. Paul's Church on June 4, with burial at Wisconsin Memorial Park. Her death is mourned by her husband, one daughter, two sons, three grandchildren, her mother-in-law, two sisters, and three brothers. We know they are comforted by the Words of God used as a text by Pastor W. Pless for the funeral sermon: "Blessed are the dead which die in the Lord from henceforth. Yea, saith the Spirit, that they may rest from their labors; and their works do follow them" (Rev. 14:13).

## † James Keith Clark †

1945 - 1971

"Enter into the joy of thy Lord." Thus spoke the Lord to James Clark on the eve of his graduation from Wisconsin Lutheran Seminary.

James Clark, son of Mr. Keith Clark and his wife Arlene, nee Ramoie, was born in Flint, Michigan, on July 20, 1945. Through Holy Baptism he became a child of God and later received a Christian training at Emanuel Lutheran School in Flint. At his confirmation he vowed faithfulness to the Lord who had bought him.

To prepare for full-time work in the Church he attended Michigan Lutheran Seminary, Northwestern College, and for the past four years Wisconsin Lutheran Seminary, Mequon, Wisconsin. His year of vicarage was spent in St. Stephen's Ev. Lutheran Church, Adrian, Michigan. He was to have graduated with a Bachelor of Divinity degree from Wisconsin Lutheran Seminary on June 2, and had already been assigned as pastor to Grace Ev. Lutheran Church, Kenton, Ohio.

On the eve of his graduation James was killed in a head-on collision near Jackson, Wisconsin. In this same accident, Miss Karen Kurth of Jackson,

to whom he was to be married in July, was injured.

James' body was laid to rest in the cemetery of St. John's Ev. Lutheran Church, East Mequon, Wisconsin, on Friday, June 4. The undersigned based his sermon on I Corinthians 15:55-57, words that speak of the victory which is ours through Christ. On June 5 a memorial service was conducted at Jerusalem Ev. Lutheran Church, Morton Grove, Illinois. The word of comfort was based on I Samuel 1:24-28. In this service President Carl Lawrenz, representing Wisconsin Lutheran Seminary, brought words of comfort and presented James' diploma to Mr. and





James Keith Clark

Mrs. Clark. Classmates of James sang two hymns at the service.

James Clark is survived by his parents, a sister Elizabeth, a brother David, his fiancée, and other relatives and friends. "Blessed are the dead which die in the Lord from henceforth. Yea, saith the Spirit, that they may rest from their labors; and their works do follow them" (Rev. 14:13).

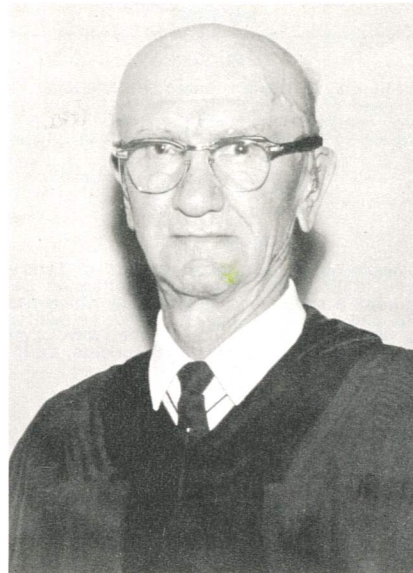
PASTOR GEORGE W. BOLDT

### † Pastor W. Sprengeler † 1894 - 1971

Pastor emeritus Walter F. Sprengeler passed away suddenly in his home in Henry, South Dakota, late Thursday evening, April 1, 1971.

Pastor Sprengeler was born on September 25, 1894, at Gibbon, Minnesota, where he was also baptized at Immanuel Lutheran Church. His parents were Frederick Sprengeler and Henrietta, nee Husfeldt. After attending Dr. Martin Luther College, Northwestern College, and Wisconsin Lutheran Seminary, he entered the holy ministry in 1919. In 1921 he was united in holy matrimony with Margaret Hunerberg, whom the Lord called to her eternal rest in 1931. In 1935 Pastor Sprengeler was married to Emma Ulbricht, who survives him.

JULY 18, 1971



Pastor Walter F. Sprengeler

Pastor Sprengeler served his Lord faithfully in the holy ministry for nearly 51 years. During this time he served as pastor at the following congregations: Zion of Burt, North Dakota (1919-24), St. John's of Hancock, Minnesota (1924-28), Emmanuel of Grover, South Dakota (1928-46), Trinity of Hoskins, Nebraska (1946-54), Good Shepherd of Cedar Rapids, Iowa (1954-62), and St. John's of Bowdle, South Dakota, from 1962 until his retirement on June 1, 1970.

Pastor Sprengeler is survived by his wife; four children, Ruth (Mrs. Sigmund Hahn), Vernon, Marlin, and Robert; 14 grandchildren; two sisters, and three brothers.

Funeral services were conducted by the undersigned at Emmanuel Lutheran Church, Grover, South Dakota, on April 6, 1971. The sermon was based on Matthew 25:21. Pastor A. P. C. Kell, president of the Dakota-Montana District, and Professor Karl G. Sievert of Northwestern Lutheran Academy both addressed the mourners. The body was laid to rest in Lorinda Cemetery at Henry, South Dakota, to await the glorious day of resurrection.

"His Lord said unto him, Well done, thou good and faithful servant. Enter thou into the joy of thy Lord."

PASTOR R. E. ZIEBELL

## Ordinations, Commissions Installations

### Installed

#### Pastors

- Frey, Raymond**, as pastor of St. John's Ev. Lutheran Church, Battle Creek, Mich., on June 13, 1971, by F. Zimmermann, authorized by W. J. Zarling (Mich.).
- Hahn, Martin R.**, as pastor of St. Mark Ev. Lutheran Church of Duncanville, Tex., and of Mt. Zion Ev. Lutheran Church, Hillsboro, Tex., on June 6, 1971, by W. A. Diehl, authorized by I. G. Frey (Ariz.-Calif.).
- Lindquist, J. Edward**, as pastor of Christ Ev. Lutheran Church, Menominee, Mich., on June 6, 1971, by W. F. Zink, authorized by K. A. Gurgel (N. Wis.).
- Nitz, Paul E.**, as associate pastor of First Ev. Lutheran Church, La Crosse, Wis., on June 20, 1971, by F. H. Miller, authorized by C. H. Mischke (W. Wis.).
- Sommer, Orvin A.**, as pastor of Immanuel Ev. Lutheran Church, Oshkosh, Wis., on June 6, 1971, by C. Koepsell, authorized by G. A. Gurgel (N. Wis.).
- Wendland, Luther**, as pastor of St. Paul's Ev. Lutheran Church, Hillsboro, Wis., on June 20, 1971, by M. J. Nommensen, authorized by C. H. Mischke (W. Wis.).

### Ordained

- Dengler, Donald C.**, as pastor of Trinity Ev. Lutheran Church, Sturgis, and Hope Ev. Lutheran Church, Spearfish, S. Dak., on June 13, 1971, by L. A. Dobberstein, authorized by A. P. C. Kell (Dak.-Mont.).
- Mitra, T. Paul**, as missionary in the Confessional Lutheran Church in India on May 23, 1971, at Mount Olive Lutheran Church, Appleton, Wis., by M. A. Schroeder, authorized by K. A. Gurgel (N. Wis.).

### Commissioned

- Habben, A. B.**, as Friendly Counselor to the Confessional Lutheran Church of Indonesia, on May 16, 1971, at Gethsemane Lutheran Church, Portland (Tigard), Ore., by M. A. Schroeder, authorized by G. Frey (P.-NW.).

## CHANGE OF ADDRESS

#### Pastors

- Beckendorf, Wilbur L.**  
Box 12  
Cochrane, Wis. 54622
- Bode, Douglas L.**  
2610 S. Wadsworth  
Denver, Colo. 80227
- Dengler, Donald C.**  
2109 Baldwin St.  
Sturgis, S. Dak. 57785
- Dolan, David B.**  
P.O. Box 126  
Hartford, Mich. 49057
- Hoyer, Waldemar R.**  
725 Northern Heights Dr.  
Rochester, Minn. 55901
- Johne, Harold R.**  
620 Komatsu  
Tsuchiura City  
Ibaraki Ken  
Japan 300
- Kaiser, Ronald N.**  
Route 1, Box 205  
Appleton, Wis. 54911
- Lenz, Kenneth**  
W215N10378  
Laurel Court  
Colgate 53017
- Pagel, Carl E.**  
9117 Old Harford Rd.  
Baltimore, Md. 21234
- Sommer, Orvin A.**  
330 N. Eagle St.  
Oshkosh, Wis. 54901
- Sullivan, John**  
808 Sacajawea Dr.  
Great Falls, Mont. 59404
- Toppe, Frederick J.**  
3009 W. Michigan Ave.  
Kalamazoo, Mich. 49007
- Warnke, Hugo M.**  
421 E. Wrenwood, Apt. 108  
Fresno, Calif. 93710
- Werner, Frederick A.**  
Route 1, Box 130  
La Crosse, Wis. 54601

#### Teacher

- Helmreich, Roland**  
1528 Denton St.  
La Crosse, Wis. 54601



## NEBRASKA

### ROSEBUD PRECONVENTION CONFERENCE

Date: July 19, 1971.

Place: Zion's Lutheran Church, Colome, S. Dak.

Time: 10 a.m. to 4 p.m.

Host Pastor: L. Strackbein.

Agenda: Reports and discussion on the business facing the Forty-first annual convention of the Wisconsin Ev. Lutheran Synod on August 4-11, 1971, at Watertown, Wis.

N. Paul, Secretary

### SOUTHERN DELEGATE CONFERENCE

Date: Monday, July 26, 1971.

Place: Redeemer Lutheran Church, Hastings, Nebraska; G. Eckert, host pastor.

Time: 10 a.m. - 5:30 p.m.

Agenda: Presentation of the reports and memorials for the 1971 convention. Overnight lodging is available. Please contact the host pastor.

K. E. Bode, Secretary

## WESTERN WISCONSIN

### CENTRAL DELEGATE CONFERENCE

Date: July 20, 1971.

Place: St. John's, Juneau, Wis.

Time: 9 a.m.

Agenda: Book of Reports and Memorials; Discussion of matters to be considered by this summer's Synod Convention. Each congregation is to have a lay delegate.

Ronald Ehlert, Secretary

### FALL PASTORS' INSTITUTE

The 1971 Pastors' Institute at Wisconsin Lutheran Seminary, Mequon, Wisconsin, will be held on five Monday afternoons beginning Oct. 4. Two lectures will be given on each of the five Mondays from 1:30-4:30 p.m.

"Isagogical-Exegetical Study in Hebrews"—Prof. F. Blume.

"The Pastor Administers His Office"—Rev. C. Mischke.

The registration fee is \$5. Reservations are to be sent to Prof. Carl Lawrenz, 11831 N Seminary Drive 65 W, Mequon, Wis. 53092.

E. G. Toepel, Secretary  
Seminary Board of Control

## REQUEST

### CRUCIFIX

Killarney Lutheran Camp in Michigan is in need of a crucifix for its worship center. Any congregation having a used one and willing to donate it for this purpose, please write:

Lutheran Campsite Association  
1200 Chisholm Rd.  
Onsted, Mich. 49265

### CHOIR MUSIC

Ascension Ev. Lutheran Church of Escondido, Calif., a mission congregation, is beginning a choir. Any congregation which has old choir music which it would be willing to donate, please contact the Rev. Lyle Lange, 1100 N. Midway Dr., Escondido, Calif., 92025. Postage will be paid.

### COMMUNION WARE

Beautiful Savior Lutheran Church, our Synod's new mission in Cincinnati, Ohio, is in need of Communion ware. If available, please contact:

Rev. Oliver H. Lindholm  
924 Cliffside Dr.  
New Carlisle, Ohio 45344

### NWL EXPIRATION CODE

The expiration date is indicated on the mailing label affixed to The Northwestern Lutheran. It is the code found immediately to the right of the name. Example: 121: The first two digits indicate the month of expiration, and the third digit indicates the year of expiration. Thus, code 121 would indicate a December, 1971 expiration date.

### VISITOR TO YELLOWSTONE

Those planning to visit Yellowstone Park are invited to worship at the following WELS churches, all of them in Montana:

Apostles Lutheran Church at Billings. Situated at 19th St. W. and Howard. Worship at 9:30 a.m. Harold Wood, Pastor.

St. Paul's Lutheran Church at Livingstone. Situated at 12th and Geysers. Worship at 9 a.m. David Newmann, Pastor.

Bozeman Lutheran Mission at Bozeman. Worship at 11 a.m. in the Wesley House at 714 S. Eighth St. David Newmann, Pastor.

## THE FORTY-FIRST BIENNIAL CONVENTION OF THE WISCONSIN EVANGELICAL LUTHERAN SYNOD

The Forty-first Biennial Convention of the Wisconsin Evangelical Lutheran Synod will meet, God willing, August 4 to 11, 1971, at Northwestern College, Watertown, Wisconsin.

The opening service with Holy Communion will be held Wednesday, August 4, 10 a.m., in St. Mark's Ev. Lutheran Church, N. 6th and Jones St. Pastor Ernst A. Wendland, Superintendent of the Lutheran Church of Central Africa, will preach the sermon. The closing service will be held Tuesday, August 10, 7:30 p.m. The sermon will be delivered by Pastor Gerald E. Free, President of the Dakota-Montana District.

The opening session will be held Wednesday, August 4, at 2 p.m. in the new gymnasium on the NWC campus. Delegates are asked to arrive early enough so that they will have time to register before the beginning of the opening session. Registrations will be made in the lobby of the new gymnasium.

The theme chosen for the Forty-first Convention, stressing the Evangelism program of our Synod, is entitled, WE BELIEVE . . . AND THEREFORE SPEAK. The two essays to be delivered during the course of the convention will emphasize the theme of the convention. Prof. Armin W. Schuetze, Wisconsin Lutheran Seminary, Mequon, Wisconsin, will present an essay entitled "We Believe—The Theology of Evangelism." The second essay, entitled "Therefore We Speak—Evangelism in Practice," will be delivered by Prof. Daniel W. Malchow, President of Northwestern Lutheran Academy, Mobridge, S. Dak.

Housing for the delegates will be provided in the dormitories on the NWC campus. Detailed instructions pertaining to housing will be mailed to each delegate together with reservation cards. All voting and advisory delegates must make reservations for housing. Reservations should be made no later than July 15, 1971. Kindly address all communications to The Convention Housing Committee, 1300 Western Ave., Watertown, Wis. 53094.

Meals will be served all bona fide delegates in the College cafeteria. Meal tickets will be available to visitors.

Mail sent to delegates during the convention should be addressed in care of Northwestern College, 1300 Western Ave., Watertown, Wis. 53094. Delegates may be reached by telephone by calling 1 (414) 261-4352.

Paul R. Hanke, Secretary

## NOMINATIONS BY THE DISTRICTS

For Offices to be Filled by Election at the 1971 Convention

(The order is determined by the Districts and at times expresses preference)

### BOARDS OF CONTROL

#### WISCONSIN LUTHERAN SEMINARY

##### WESTERN WISCONSIN DISTRICT

1 Pastor: Emil Toepel  
Norbert Paustian  
Otto Heier

##### MICHIGAN DISTRICT

1 Pastor: Herbert Buch  
Edward Zell  
Werner Franzmann

##### SOUTHEASTERN WISCONSIN DISTRICT

1 Layman: Norbert Ehlert  
Gilbert Klug  
Paul Wolgram

#### DR. MARTIN LUTHER COLLEGE

##### MINNESOTA DISTRICT

1 Pastor: Otto Engel  
Frederic Tabbert  
Ralph Polzin

##### NORTHERN WISCONSIN DISTRICT

1 Pastor: G. Jerome Albrecht  
Arnold C. Meyer  
Norval W. Kock

#### MINNESOTA DISTRICT

1 Teacher: Gerhard Bauer  
Darrell Knippel  
Marlyn Kruse

#### NORTHWESTERN COLLEGE

##### MINNESOTA DISTRICT

1 Pastor: Ralph Goede  
Delbert Begalka  
Robert Beckmann

##### SOUTHEASTERN WISCONSIN DISTRICT

1 Pastor: Jonathan Mahnke  
Martin L. Stern  
Philip R. Janke

##### WESTERN WISCONSIN DISTRICT

1 Layman: George Reuel  
Dr. William Amthor  
George Hackbarth

#### MARTIN LUTHER ACADEMY

##### MINNESOTA DISTRICT

1 Pastor: Thomas Henning  
Martin Birkholz  
Herbert Muenkel

1 Layman: Dr. Melvin Dumke  
Donald Kock  
Martin Bode



**NORTHWESTERN LUTHERAN ACADEMY****DAKOTA-MONTANA DISTRICT**

- 1 Pastor:  
Nathan Engel  
Gilbert Bunde  
Ronald Heins
- 1 Layman:  
John Rabenberg  
Vernon Meyer  
Wilfred Bauer

**MICHIGAN LUTHERAN SEMINARY****MICHIGAN DISTRICT**

- 1 Pastor:  
Werner Franzmann  
Kenneth Vertz  
Theodore Frey
- 1 Teacher:  
Milton Bugbee  
Douglas Stindt  
Robert Gruetzmacher
- 1 Layman:  
George Reschke  
Martin Krieger  
Robert Rogien

**BOARD OF SUPPORT****MINNESOTA DISTRICT**

- 1 Pastor:  
Walter Oelhafen, Sr.  
Herbert Hackbarth  
Norbert Gieschen

**SOUTHEASTERN WISCONSIN DISTRICT**

- 1 Pastor:  
W. B. Nommensen  
Roland Ehlke  
Donald E. Kolander

**BOARD FOR PARISH EDUCATION****MICHIGAN DISTRICT**

- 1 Pastor:  
Jerome Spaude  
John Brenner  
Ronald Freier

**MINNESOTA DISTRICT**

- 1 Pastor:  
Martin B. Petermann  
Marvin H. Hanke  
Allen Zenker
- 1 Professor: (Northwestern College)  
Armin Panning  
Paul Eickmann  
George Baer

**BOARD OF TRUSTEES****DAKOTA-MONTANA DISTRICT**

- 1 Pastor:  
Marvin Putz  
Edward Werner  
R. H. Roth

**WESTERN WISCONSIN DISTRICT**

- 1 Pastor:  
Norbert Paustian  
Walter Schumann, Jr.  
William Lange

**MINNESOTA DISTRICT**

- 1 Layman:  
Marvin M. Schwan  
Robert Nordby  
Herbert Schaper

**NEBRASKA DISTRICT**

- 1 Layman:  
Charles Caskey  
Steve Henke  
Burnell Pohlman

**Nominations Made by The Nominating Committee  
of the Wisconsin Ev. Lutheran Synod for the  
Forty-first Convention, August 4-11, 1971**

**Chairman, General Board for Home Missions**

- Pastor George Boldt, Morton Grove, Illinois  
Pastor Henry Paustian, Watertown, Wisconsin  
Pastor Marvin Radtke, Eagle River, Wisconsin

**Chairman, Board for World Missions**

- Pastor Robert Sawall, Manitowoc, Wisconsin  
Pastor Edmund O. Schulz, Redwood Falls, Minnesota  
Pastor Raymond H. Zimmermann, Glendale, Arizona

**Executive Committee for Apache Indian Mission**

- Pastor F. H. Heidemann, New London, Wisconsin  
Pastor Frederic Nitz, New Ulm, Minnesota  
Pastor Verdell Tassler, Beatrice, Nebraska

**Executive Committee for Latin American Missions**

- Pastor Walter Diehl, Dallas, Texas  
Pastor Harold Essmann, Waterloo, Wisconsin  
Pastor Charles Found, Thousand Oaks, California

**Executive Committee for Japanese Mission**

- Pastor Karl Bast, Madison, Wisconsin  
Pastor Richard Seeger, Wauwatosa, Wisconsin  
Pastor Luther Weindorf, Seattle, Washington

**Executive Committee for the Lutheran Church of Central Africa**

- Pastor Otto Heier, Tomah, Wisconsin  
Pastor Gerhard Horn, Red Wing, Minnesota  
Pastor Alvin Werre, Clatonia, Nebraska

**Executive Committee for Mission in Germany**

- Mr. Herman Meyer, Red Wing, Minnesota (Bay City, Wisconsin)  
Mr. Walter Uhlhorn, Darfur, Minnesota

**Executive Committee for Chinese Ev. Lutheran Church**

- Pastor Waldemar Hoyer, Rochester, Minnesota  
Pastor Leonard J. Koeninger, Plymouth, Michigan  
Pastor Marvin Zank, Medford, Wisconsin

**Chairman, Board of Trustees**

- Pastor Elton Huebner, Beaver Dam, Wisconsin  
Pastor Norval Kock, Manitowoc, Wisconsin  
Pastor Carl Leyrer, Milwaukee, Wisconsin

**Northwestern Publishing House Board of Directors**

- Pastor D. H. Kuehl, Hartford, Wisconsin  
Pastor Reginald Pope, Mequon, Wisconsin  
Pastor Alfred Walther, Milwaukee, Wisconsin  
Pastor Hugo Fritze, Ixonia, Wisconsin  
Pastor Robert Hartman, Lake Mills, Wisconsin  
Pastor Marvin Otterstatter, Milwaukee, Wisconsin  
Mr. Helmut Ferus, Oconomowoc, Wisconsin  
Mr. Herman Gieschen, Wauwatosa, Wisconsin  
Mr. Herbert Schaper, New Ulm, Minnesota

**Board for Parish Education**

- Mr. Walmer Baehman, Muskegon, Michigan  
Mr. Harold Buelow, Mequon, Wisconsin  
Dr. Alfred Schoennauer, Portland, Oregon

**Board for Parish Education**

- Mr. Robert Adickes, Lakeside Lutheran High School  
Mr. Paul Ruege, Wisconsin Lutheran High School  
Mr. Daniel Schmeling, St. Croix Lutheran High School

**Coordinating Council**

- Mr. Darwin Dussseau, Norfolk, Nebraska  
Mr. Max P. Lehninger Jr., Milwaukee, Wisconsin  
Mr. Monroe Mund, Milwaukee, Wisconsin  
Mr. James Carlson, Rhinelander, Wisconsin  
Mr. John Steudel, Appleton, Wisconsin  
Mr. Harold Wolf, Brillion, Wisconsin

**Special Ministries Board**

- Mr. Douglas Eggert, Menomonee Falls, Wisconsin  
Mr. Walter Guezmann, Norfolk, Nebraska  
Mr. Richard Raabe, Wauwatosa, Wisconsin

**Chairman, Commission on Higher Education**

- Pastor Kurt Eggert, Milwaukee, Wisconsin  
Pastor Winfred B. Nommensen, Milwaukee, Wisconsin  
Pastor Edward Stelter, Two Rivers, Wisconsin

**Commission on Higher Education**

- Pastor Robert Krause, Wisconsin Lutheran High School  
Pastor Loren Schaller, Manitowoc Lutheran High School  
Pastor Harold Warnke, Fox Valley Lutheran High School

Synod Nominating Committee  
Delmar C. Brick, Secretary



**NAMES REQUESTED  
For Our New Missions**

In recent months the Wisconsin Synod began work in the states and cities listed below. Please send all names of members who moved into the general area of these cities, as well as names of people, who may be interested in a Wisconsin Synod mission, to the Synod's Membership Conservation office. Names as well as pertinent information regarding members referred will be forwarded to the nearest pastor and/or mission board chairman. Pastors who want stations included in this list are to inform the respective District mission board chairman. Area names are dropped from this list after appearing in the Yearbook for one year.

- |                |   |
|----------------|---|
| Alaska         | Kenai Peninsula*  |
| Arizona        | Sun City<br>Yuma  |
| Arkansas       | Little Rock*  |
| California     | Fresno<br>Novato (Marin County)*<br>Pasadena<br>Riverside<br>Torrance<br>Victorville* |
| Connecticut    | Danbury   |
| Florida        | Fort Myers*<br>Jacksonville<br>West Palm Beach*                                       |
| Georgia        | Atlanta   |
| Illinois       | Aurora<br>Jacksonville<br>Palatine<br>Rockford*<br>South Bend*                        |
| Indiana        | South Bend*   |
| Louisiana      | New Orleans   |
| Maryland       | North Washington Area   |
| Michigan       | Grand Blanc*<br>Marquette*<br>Midland*  |
| Minnesota      | Brainerd<br>Inver Grove Heights*  |
| Montana        | Bozeman*  |
| Nevada         | Las Vegas*  |
| North Dakota   | Jamestown*<br>Minot*  |
| Ohio           | Cincinnati*<br>North Columbus   |
| Oklahoma       | Tulsa   |
| Oregon         | Bend*<br>Corvallis*   |
| Pennsylvania   | Allentown*<br>Pittsburgh*   |
| South Carolina | Columbia  |
| South Dakota   | Pierre<br>Yankton*  |
| Tennessee      | Nashville*  |
| Texas          | Angleton/Freepoint<br>Clear Lake City<br>Fort Worth<br>Mercedes*<br>Salt Lake City*   |
| Utah           | Salt Lake City*   |
| Wisconsin      | Cedarburg<br>Hubertus<br>Stevens Point*   |
| Hawaii         | Honolulu  |

**CANADA**

- |                  |           |
|------------------|-----------|
| British Columbia | Kelowna   |
| Alberta          | Barrhead* |

\*Denotes exploratory services.

(New Missions in cities already having a WELS church are not listed.)

Note: All names and addresses of members who move, unless they can be transferred directly to a sister congregation, should be mailed to our

WELS MEMBERSHIP CONSERVATION  
10729 Worden, Detroit, Mich. 48224

**NAMES REQUESTED**

New mission stations which the Wisconsin Ev. Lutheran Synod is systematically opening are listed periodically in *The Northwestern Lutheran*. Names, addresses, time of services, etc., of older, established congregations appear in the Synod's *Yearbook*.

Pastors, church secretaries, relatives or friends are asked to send names and addresses of moving members immediately to the Synod's Soul Conservation office if the location of the nearest WELS church is not known.

Information regarding any of the above may be obtained by writing to the address below.

WELS SOUL CONSERVATION  
10729 Worden  
Detroit, Mich. 48224

**EXPLORATORY**

**BEND, OREGON**

The Pacific Northwest District Missionary is now working in Bend, Ore., exploring the possibility of establishing a WELS mission in that area. If you know of someone who might be interested, please contact:

Pastor Warren Widmann  
1353 E. 7th St.  
Bend, Ore. 97701  
Tel.: (503) 382-6432

**JACKSONVILLE, ILLINOIS**

The Western Wisconsin District Mission Board is now conducting services in Jacksonville, Ill., on the first Sunday of every month. Names of people in this area and any pertinent information may be sent to the undersigned.

Pastor David N. Rutschow  
605 Sangamon Road  
Marquette Heights  
Pekin, Ill. 61554

**NAMES REQUESTED**

**ALBANY/SCHENECTADY/TROY,  
NEW YORK AREA**

Persons in this area sharing the confessional concerns of the Wisconsin Ev. Lutheran Synod are requested to contact:

Pastor Paul Kelm  
618 E. New Lenox Rd.  
Pittsfield, Mass. 01201

**PLACE AND TIME OF SERVICE**

**LAS VEGAS, NEVADA**

The WELS congregation in Las Vegas now meets at

Southern Nevada Blind Center  
1001 N. Bruce St.  
Las Vegas, Nev. 89101.

Sunday school is conducted at 8:45 a.m. Sundays with the worship service following at 9:30 a.m., except on the first Sunday of the month when Sunday school is at 6:45 p.m. and the service at 7:30 p.m. You may contact Pastor Herman John at 31785 Yucaipa Blvd., Yucaipa, Calif. 92399; telephone (714) 794-2554.

**ESCONDIDO, CALIFORNIA**

During the months of June, July and August, Ascension Lutheran Church of 240 S. Broadway, Escondido, Calif., will observe the following summer schedule: Sunday school and Bible class at 8 a.m., and worship services at 9:15 a.m. The regular schedule will be resumed in September.

Lyle W. Lange, Pastor

**PAULLINA, IOWA**

WELS services in Paullina, Iowa, are being held each Sunday at the William Miller residence, 313 S. Willow St., Paullina, Iowa. Taped services are conducted at 10:15 a.m. every Sunday except the third Sunday of the month. On that day a Communion service is conducted at 2 p.m. by Pastor Larry Cross of Sioux City, Iowa.

**BALTIMORE, MARYLAND**

Atonement Lutheran Church of Baltimore, Md., now meets at the Harford Hills Elementary School, corner of Joppa and Old Harford Roads. This is between the Beltway Exits 30 and 31. The Sunday school and adult Bible class meet at 10 a.m. The worship service is at 11 a.m. Inquiries and referrals should be addressed to:

Pastor Carl Pagel  
2104 Cloville Ave.  
Baltimore, Md. 21204

**EXCELSIOR, MINNESOTA**

Faith Lutheran Church is presently holding Sunday services at the Deephaven Village Hall, Hwy. 82 and Cottagewood Rd., at 9 a.m. WELS referrals, and the names of any prospects who may be interested and who live in western Hennepin County and the surrounding Lake Minnetonka communities, may be brought to the attention of the undersigned.

Rev. A. E. Lemke  
Box 373  
Excelsior, Minn. 55331  
Telephone 474-4966

**ATLANTA, GEORGIA**

Sola Scriptura Evangelical Lutheran Church of Atlanta, Ga., is presently worshipping at the Clayton Co. Civic Center, 2088 Riverdale Rd., College Park, Ga. Sunday school and Bible class every Sunday at 9:15 a.m. Divine service at 10 a.m. If you know of anyone in the greater Atlanta area that might be interested in a WELS church, please send the names to:

Pastor Joh. P. Meyer  
3193 Weslock Circle  
Decatur, Ga. 30034

**CROWN OF LIFE EV. LUTHERAN CHURCH  
NEW ORLEANS, LOUISIANA**

Services are now conducted in the ground-floor meeting room, Holiday Inn East, at the junction of I-10 and Highway 90, New Orleans. Bible study at 9:15 a.m. Worship service at 10:30. Visitors, please call for confirmation of schedule!

Pastor Douglas Weiser  
(504) 254-2576

**SAN ANTONIO, TEXAS**

Lackland AFB, Kelly AFB, Randolph AFB, Fort Sam Houston.

Our Savior Lutheran Church, San Antonio, Tex., is now worshipping in the Shenandoah Clubhouse, 4300 Ramsgate. Sunday worship is at 10:30 a.m.

Pastor William Krueger  
3919 Shenandale Dr.  
San Antonio, Tex. 78230

**BRainerd, MINNESOTA**

Christ Ev. Lutheran Church of Brainerd, Minn., has changed its time of service from 7 p.m. Sunday evenings to 8 a.m. Sunday mornings. The church is located at 1009 S. Seventh St. in Brainerd.

Vicar Tom Liesener

**LUTHERAN COLLEGIAN ALUMNI**

All Lutheran Collegian alumni please send your name, address and last LC chapter to the alumni director:

Marilyn Miller  
19 Old Mamaroneck Rd., Apt. 3G  
White Plains, N. Y. 10605

DOROWS HERBERT  
NEWTON IA  
50208  
111