

DR. MARTIN LUTHER RESIDENTIAL HIGH SCHOOL

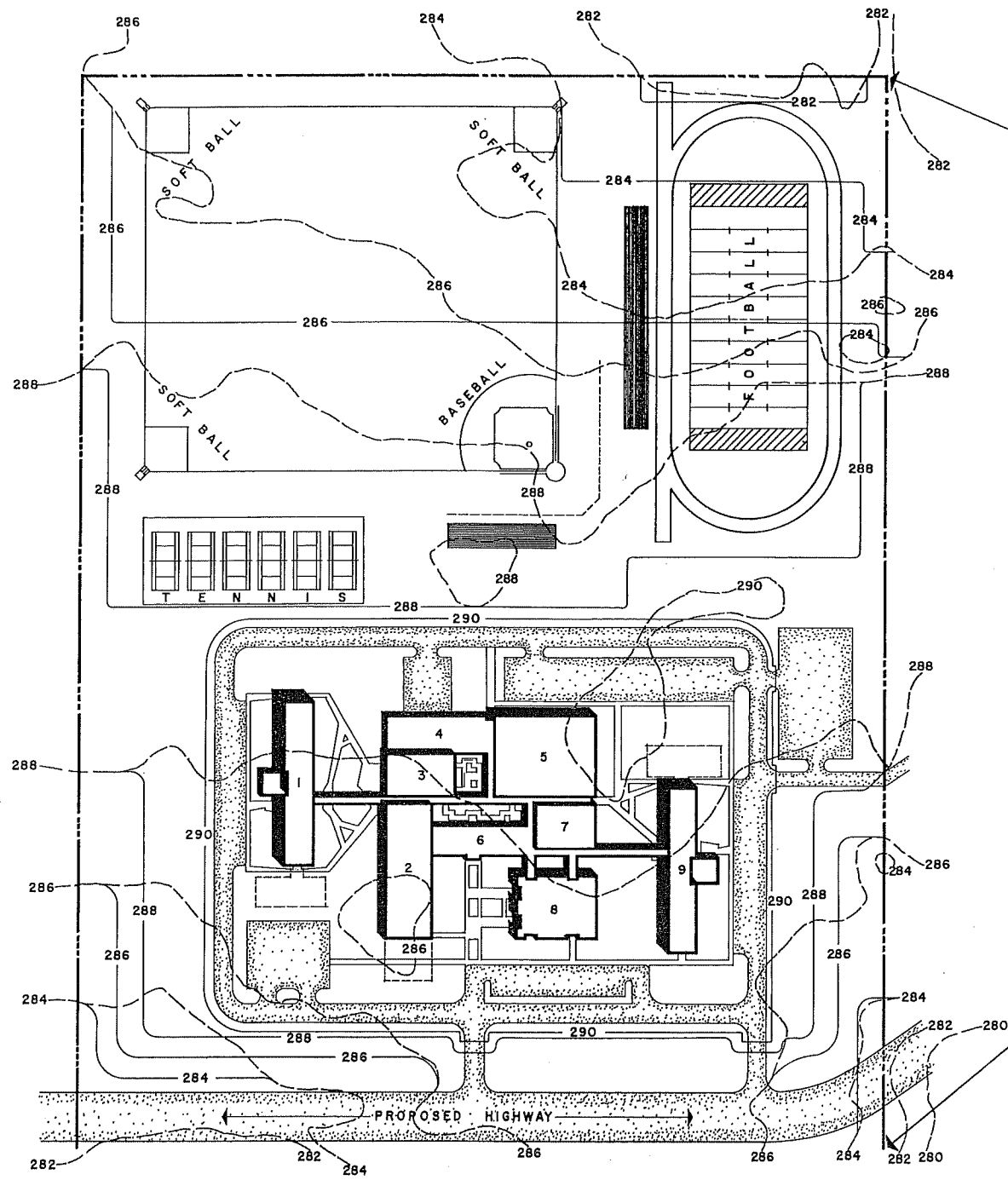
PERSPECTIVE

DR. MARTIN LUTHER RESIDENTIAL HIGH SCHOOL NEW ULM, MINNESOTA

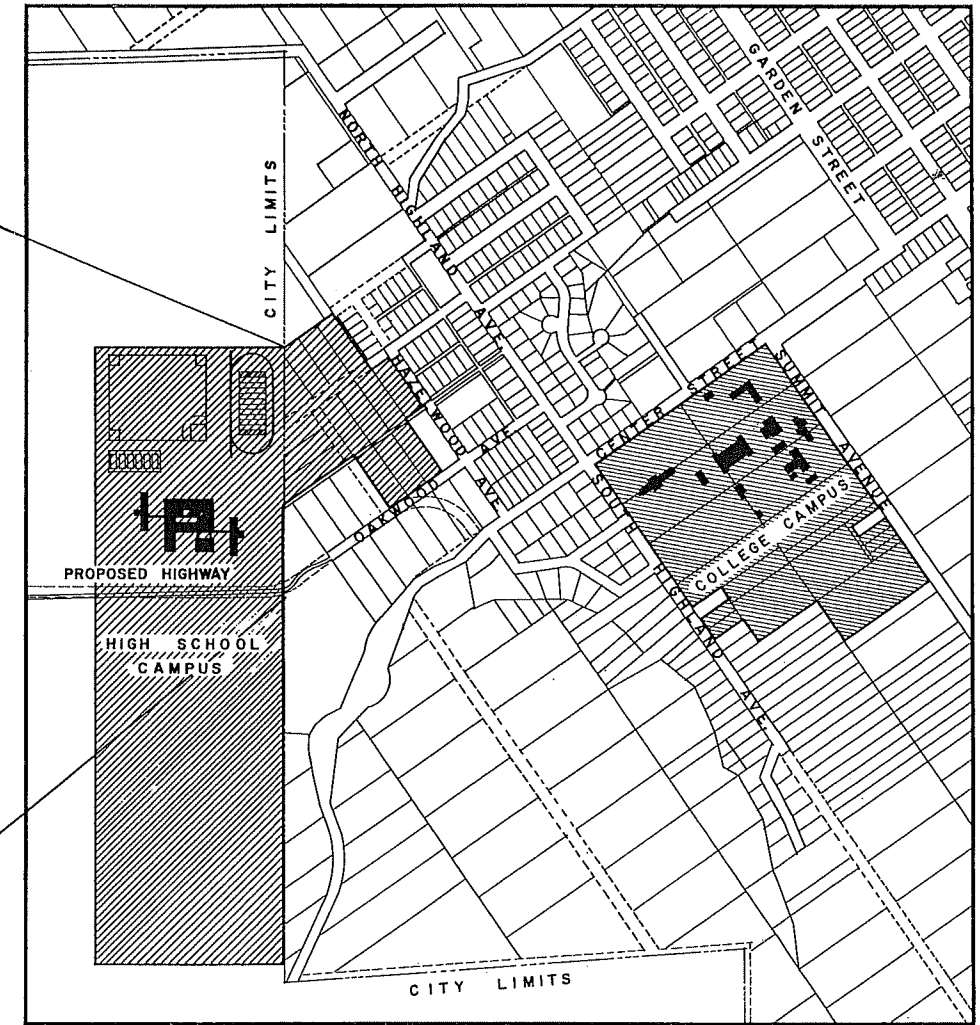
TOLTZ, KING, DUVALL, ANDERSON, & ASSOC. INC.  
COMM. NO. 4597

ARCHITECTS & ENGINEERS  
DRG. NO. 17

ST. PAUL, MINNESOTA  
JULY 31, 1963

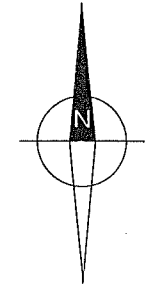


SITE PLAN



CAMPUS LOCATIONS

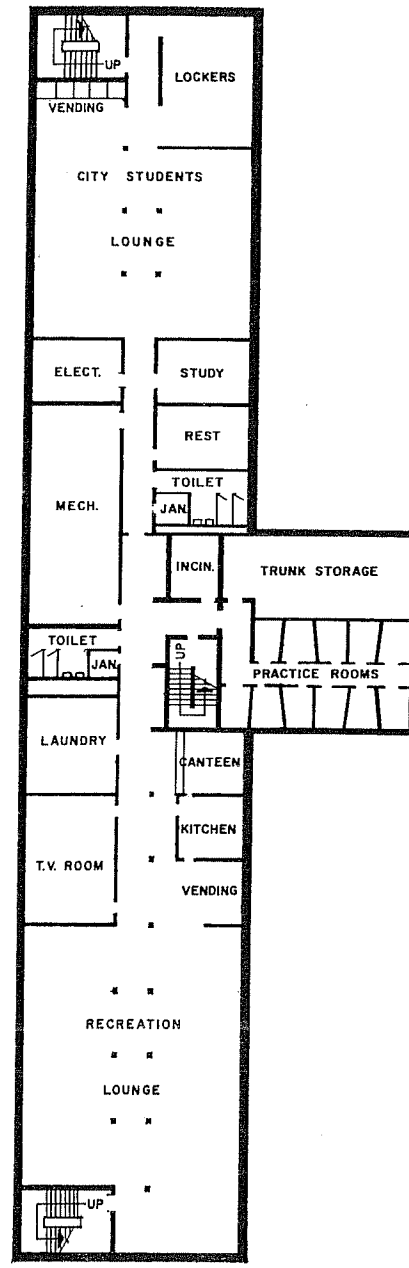
- KEY**
- 1. BOYS DORMITORY (FIRST PHASE OF CONSTRUCTION)
  - 2. CLASS ROOMS
  - 3. DINING
  - 4. UTILITIES (FIRST PHASE OF CONSTRUCTION)
  - 5. GYMNASIUM
  - 6. ADMINISTRATION
  - 7. MUSIC
  - 8. CHAPEL - AUDITORIUM
  - 9. GIRLS DORMITORY (FIRST PHASE OF CONSTRUCTION)
  - EXISTING CONTOURS
  - NEW CONTOURS



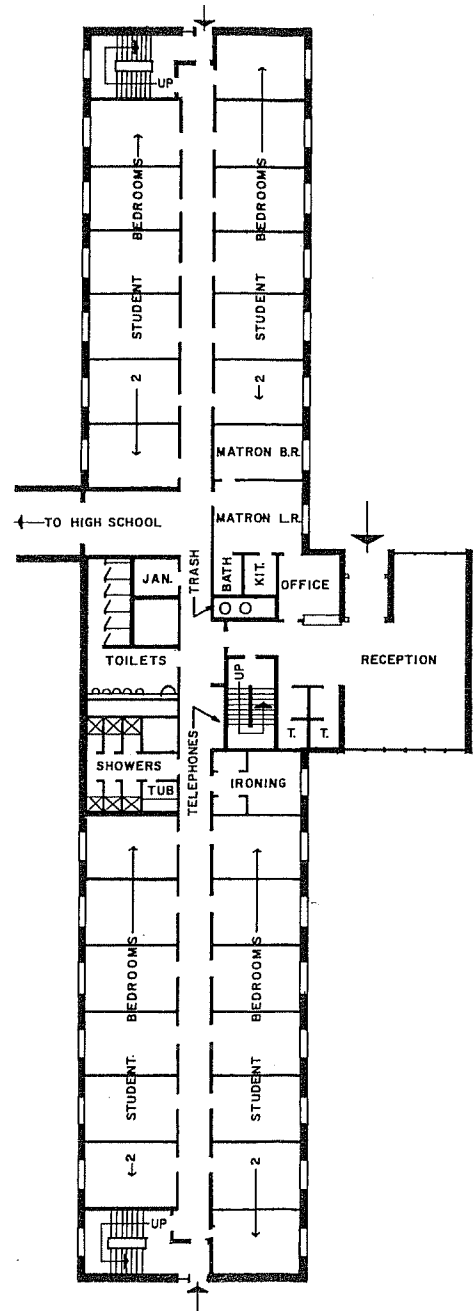
# SITE PLAN

DR. MARTIN LUTHER RESIDENTIAL HIGH SCHOOL NEW ULM, MINNESOTA

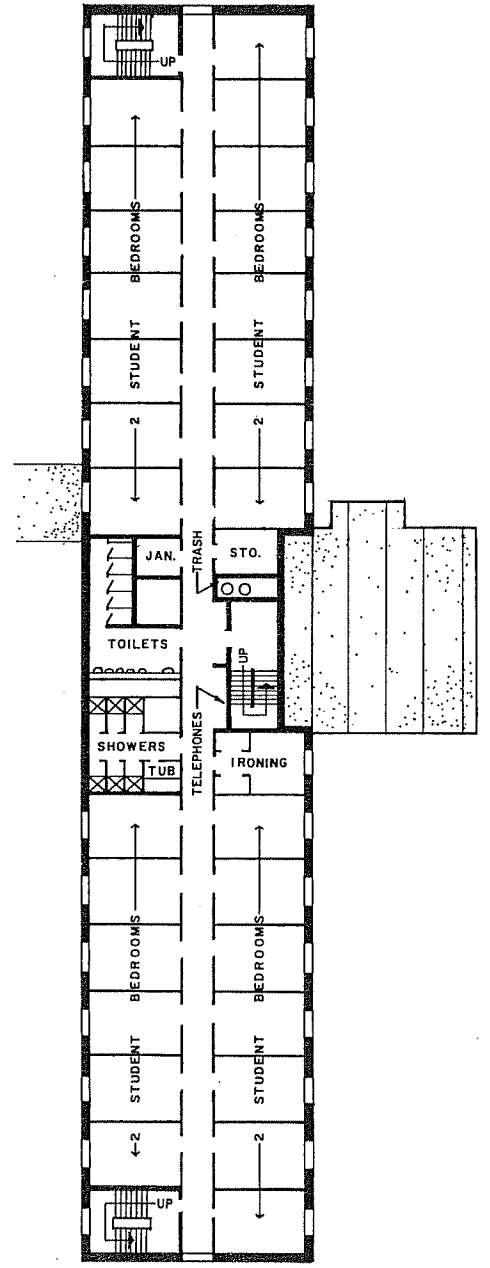
TOLTZ, KING, DUVALL, ANDERSON, & ASSOC. INC. ARCHITECTS & ENGINEERS ST. PAUL, MINNESOTA  
 COMM. NO. 4597 DRG. NO. 18 JULY 31, 1963



BASEMENT



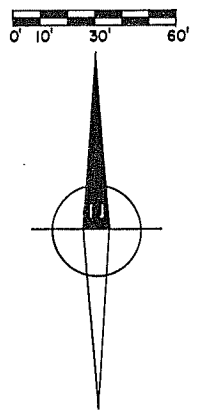
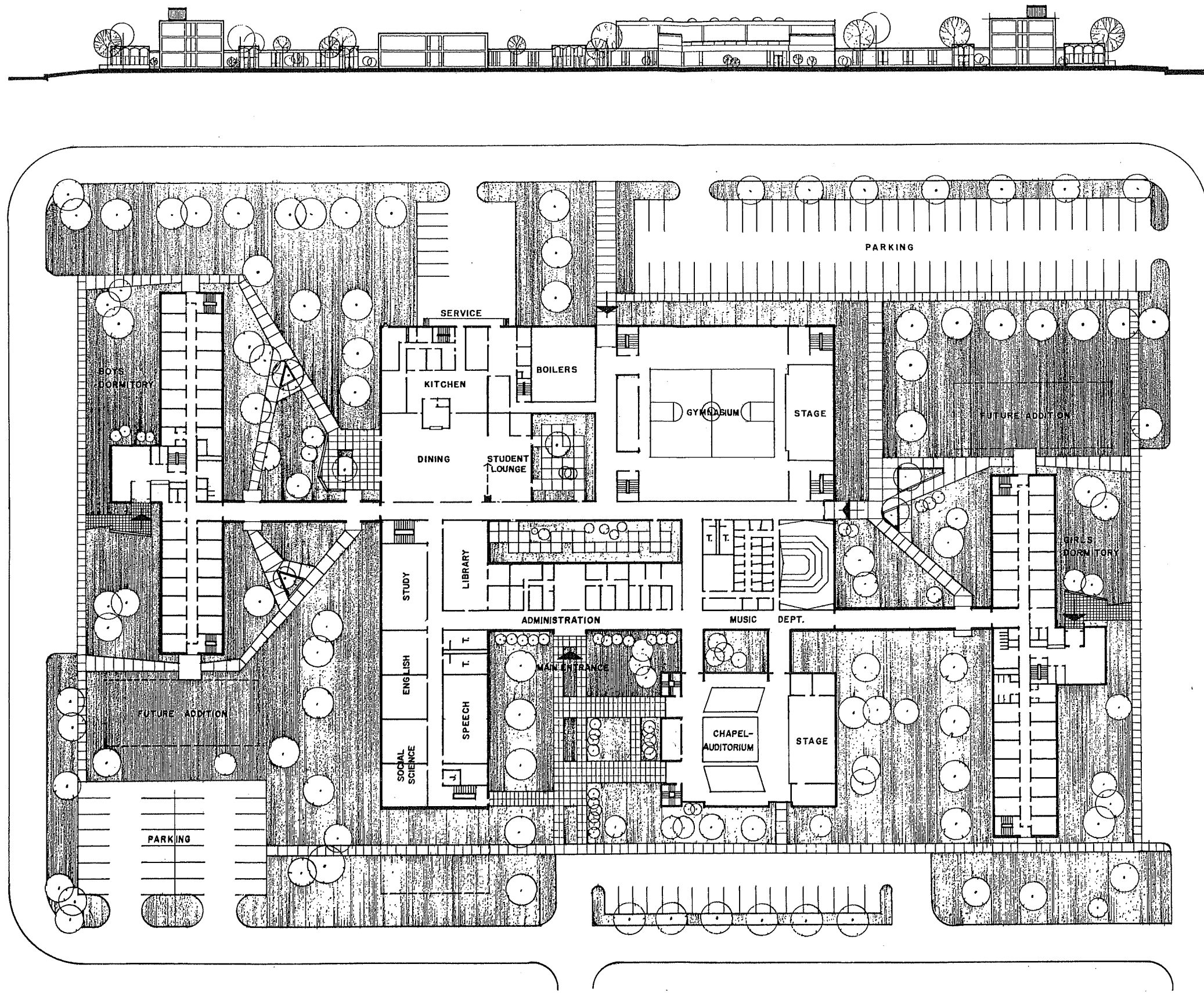
FIRST FLOOR



SECOND & THIRD FLOORS

# DORMITORY PLANS

DR. MARTIN LUTHER RESIDENTIAL HIGH SCHOOL NEW ULM, MINNESOTA  
 TOLTZ, KING, DUVALL, ANDERSON, & ASSOC. INC. ARCHITECTS & ENGINEERS ST. PAUL, MINNESOTA  
 COMM. NO. 4597 DRG. NO. 22 JULY 31, 1963



# CAMPUS PLAN

FIRST FLOOR

DR. MARTIN LUTHER RESIDENTIAL HIGH SCHOOL NEW ULM, MINNESOTA

TOLTZ, KING, DUVALL, ANDERSON, & ASSOC. INC. ARCHITECTS & ENGINEERS  
 COMM. NO. 4597 DRG. NO. 19

ARCHITECTS & ENGINEERS

ST. PAUL, MINNESOTA  
 JULY 31, 1963